

## Infrastructure of the B.Ed Building-

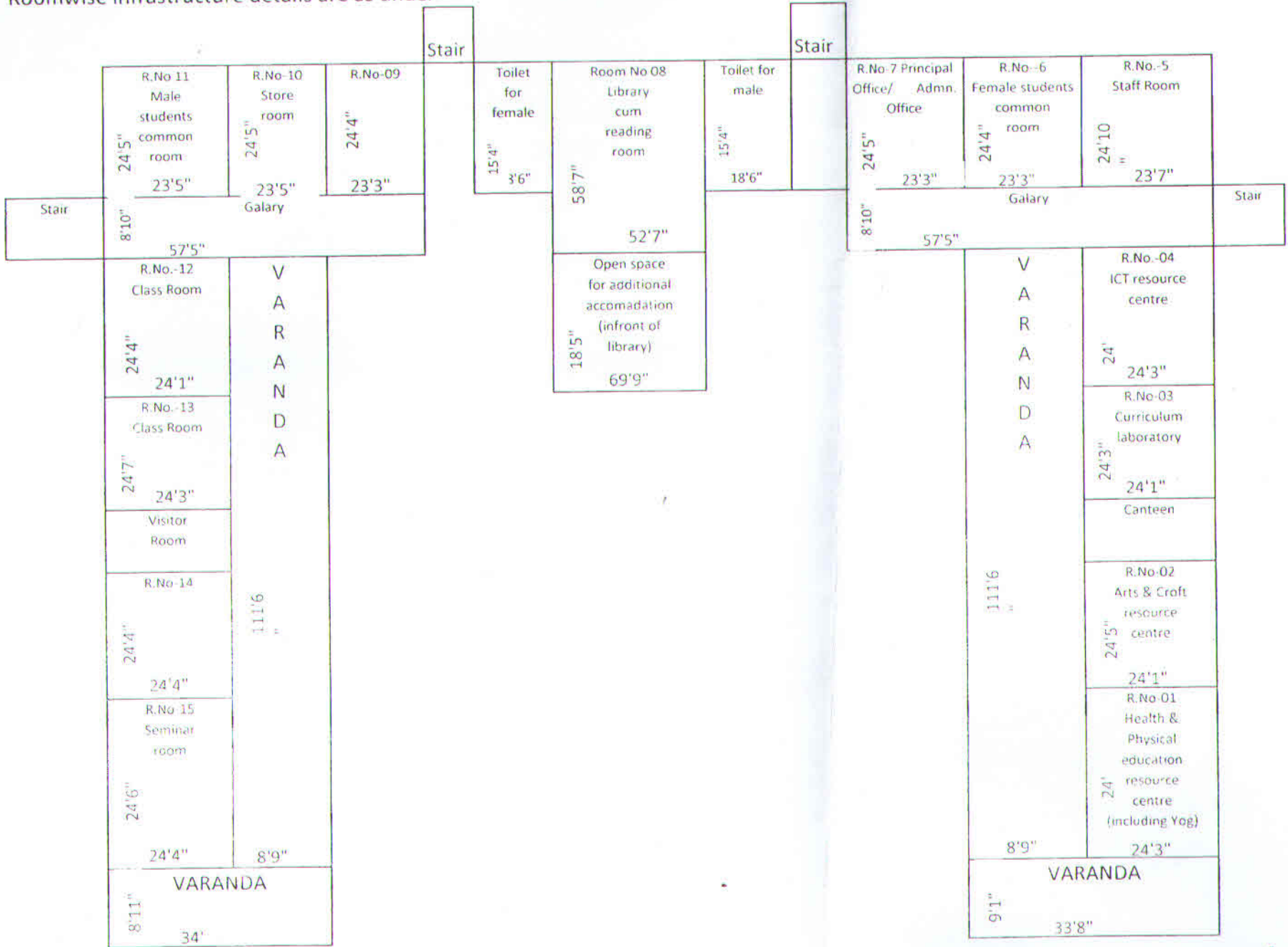
1. Class Room I :	Room No. 12	24'1"x24'4"
II:	Room No. 13	24'3"x24'7"
2. Multipurpose Hall		52'7"x58'7"
3. Library cum reading room	Room No. 08	52'7"x58'7"
4. ICT resource centre	Room No.04	24'3"x24'
5. Curriculum Laboratory	Room No.03	24'3"x24'
6. Arts & Craft resource centre	Room No.02	24'1"x24'5"
7. Health & Physical Education Resource centre (including Yog)	Room No.01	24'x24'3"
8. Principal Office (combined with Admn.Office)	Room No.07	23'x24'5"
9. Staff Room	Room No.05	23'7"x24'10"
10.Administrative Office (Combined with Principal Office)	Room No.07	23'x24'5"
11.Visitors Room in between	Room No.13&14	08'04"x25'
12.a. Female students common Room	Room No.06	23'3"x24'4"
b.Male students common Room	Room No.11	23'5"x24'4"
13.Seminar Room	Room No.15	24'4"x24'6"
14.Canteen in between	Room No.02&03	08'04"x25'
15.a.Separate Toilet for male students		18'6"x15'4"
b.Separate Toilet for female students		18'6"x15'4"
16.Parking space Located in ground floor (sufficient space)		
17.Store Room	Room No.10	23'5"x24'5"
18.Multipurpose play field in the ground floor (sufficient space)		
19.Open space for additional accomadation (infront of library)		69'9"x18'5"

*Ubarajan*

प्राचार्य

शिक्षा विभाग (बी.एड/ डी.एड.)  
गुरु महेश योगी वैदिक विश्वविद्यालय  
काम - लाम्सी, लहरील - जबलपुर / M.P.

Roomwise infrastructure details are as under-



Total Builtup area = 3000 Sq.Mr.

*UBarsaigan* प्राचार्य  
 शिक्षा विभाग (बी.एड/डी.एड.)  
 महर्षि महेश योगी वैदिक विश्वविद्यालय  
 नवम - तमसी नवरील - जयलपर (म.प्र.)